

BED & BREAKFAST

Residential Accommodation

BBSI offers the following:

Glendevon Hotel

85-89 West Hill Road, Bournemouth



This established hotel is in the West Cliff area of Bournemouth, very close to the beach and a 15-minute walk to the town centre and BBSI. The hotel has dining room, a comfortable lounge to relax in and a bar. All rooms have TV, en-suite or private bathroom facilities and tea and coffee making facilities. Wireless Internet (WiFi) is available. There is a pay-phone in Reception.

Tariffs per person (*not available from 18 December 2010 to 01 January 2011*)

Single Room En-Suite

GBP 194.00 per week, 26 June to 28 August 2010

GBP 173.00 per week, 28 August to 25 June 2011

Double Room En-Suite, Single Occupancy

GBP 252.00 per week, 26 June to 28 August 2010

GBP 220.00 per week, 28 August to 25 June 2011

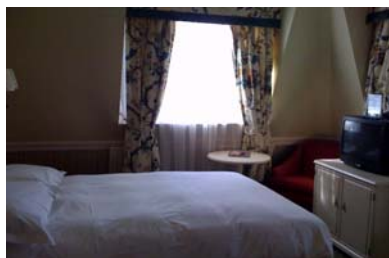
Twin or Double Room En-Suite, 2 People Sharing

(Only available for 2 people travelling together)

GBP 168.00 per week, 26 June to 28 August 2010

GBP 147.00 per week, 28 August to 25 June 2011

Royal Bath Hotel
(4 Star Residential Hotel)
Bath Road, Bournemouth



This 4 star hotel is in a prime location overlooking Bournemouth beaches, adjacent to the town centre, shops, galleries and museums and a short walk to BBSI. Each single bedroom has satellite TV, Internet and coffee making facilities.

Tariffs per person throughout 2010

Single Room En-Suite Bed & Breakfast

GBP 245.00 per week

BBSI Terms and Conditions for booking Residential Hotel Accommodation

- Students can elect to pay the hotel directly. If they wish this option, they must provide credit card details in advance. Full payment will then be deducted from their credit card by the hotel. Bookings will not be confirmed until the hotel has received full payment.
- Students can elect to book their first 4-weeks accommodation through BBSI and be invoiced for the accommodation fees. Full payment will be required in advance and bookings will not be confirmed until full payment has been received by BBSI. BBSI can only book a maximum of 4-weeks hotel accommodation. Should students wish to extend their stay beyond this period, they must do so directly with the hotel, on arrival, and pay the hotel directly.
- Bookings must be for full weeks, not part weeks, and arrival must be confirmed as either a Saturday or Sunday. Departure must be on a Saturday.
- Students must be 18 years or above.
- A minimum of 4 weeks notice is required to cancel a reservation.

BBSI acts as an intermediate between the hotel and students in order to provide students with accommodation options. The information provided above has been supplied by the hotel. Whilst every care has been taken in compiling the information supplied, BBSI cannot accept responsibility for the accuracy of this information or be held responsible for any errors or inaccuracies in the supplied information.