

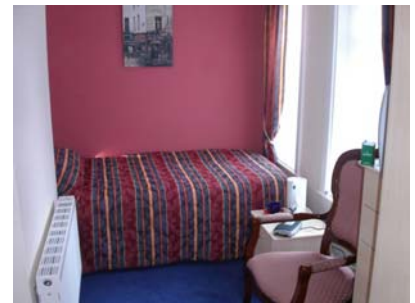
## **ROOM ONLY**

### **Residential Accommodation**

*BBSI recommends the following:*

#### **Glendevon Hotel**

85-89 West Hill Road, Bournemouth



This established hotel is in the West Cliff area of Bournemouth, very close to the beach and a 15-minute walk to the town centre and BBSI.

The hotel has dining room, a comfortable lounge to relax in and a bar.

All rooms have TV, en-suite or private bathroom facilities and tea and coffee making facilities.

Wireless Internet (WiFi) is available. There is a pay-phone in Reception.

**Tariffs per person** (*not available from 20 December 2009 to 08 January 2010*)

#### **Single Room En-Suite**

*GBP 130.00 per week, 26 September to 19 December 2009*

*GBP 130.00 per week, 09 January to 26 June 2010*

*GBP 172.00 per week, 26 June to 28 August 2010*

#### **Twin or Double Bed Room En-Suite, 2 Persons Sharing**

*(Only available for 2 people travelling together)*

*GBP 100.00 per week, 26 September to 19 December 2009*

*GBP 100.00 per week, 09 January to 26 June 2010*

*GBP 140.00 per week, 26 June to 28 August 2010*

**Babbacombe Court**  
28 West Hill Road, Bournemouth



This residential student accommodation is a 10-15 minute walk to the town centre and to BBSI. It offers a large dining room/lounge for students' use. Twin or single bedrooms have a desk, chair, wardrobe, and television/DVD player. All rooms have en-suite bath/shower facilities. Bed linen will be provided and laundered weekly. Students must bring their own towels. Kettles, cups and saucers are provided in every room. Electricity, gas and water are included in the tariff. The electrical current is 240 volts AC (50 cycles) and students from some countries may require a transformer and a plug adaptor. There is a launderette nearby and an ironing room in the residence, complete with an iron and an ironing board. Wireless Internet (WiFi) is available.

**Tariffs per person** (*not available from 20 December 2009 to 02 January 2010*)

**Single Room En-Suite**

*GBP 128.50 per week, 26 September to 19 December 2009*

*GBP 128.50 per week, 03 January to 26 June 2010*

*GBP 168.00 per week, 26 June to 28 August 2010*

**Double Bed Room En-Suite, Single Occupancy**

*GBP 180.00 per week, 26 September to 19 December 2009*

*GBP 180.00 per week, 03 January to 26 June 2010*

*GBP 220.00 per week, 26 June to 28 August 2010*

**Twin or Double Bed Room En-Suite, 2 People Sharing**

*(Only available for 2 people travelling together)*

*GBP 95.00 per week, 26 September to 19 December 2009*

*GBP 95.00 per week, 03 January to 26 June 2010*

*GBP 115.00 per week, 26 June to 28 August 2010*

## **Silver How Hotel**

West Cliff Gardens, Bournemouth



A warm welcome awaits you at this family run hotel which is situated in a quiet location near the cliff top overlooking Bournemouth Bay, in one of the most favoured positions on the West Cliff. It is a 10-15 minute walk to the town centre and BBSI. All rooms have colour TV, en-suite facilities, tea and coffee making facilities and a study area/desk. Free Wireless Internet (WiFi) is available.

### **Tariffs per person**

*(not available from 20 December 2009 to 02 January 2010, or from April to September 2010)*

#### **Single Room En-Suite**

*GBP 115.00 per week, 26 September to 19 December 2009*

*GBP 115.00 per week, 03 January to 31 March 2010*

#### **Double Bed Room En-Suite, Single Occupancy**

*GBP 185.00 per week, 26 September to 19 December 2009*

*GBP 185.00 per week, 03 January to 31 March 2010*

#### **Twin or Double Bed Room En-Suite, 2 People Sharing**

*(Only available for 2 people travelling together)*

*GBP 115.00 per week, 26 September to 19 December 2009*

*GBP 115.00 per week, 03 January to 31 March 2010*

### **BBSI Terms and Conditions for booking Residential Accommodation**

- Students can elect to pay the residence directly. If they wish this option, they must provide credit card details in advance. Full payment will then be deducted from their credit card by the residence. Bookings will not be confirmed until the residence has received full payment.
- Students can elect to book their first 4-weeks accommodation through BBSI and be invoiced for the accommodation fees. Full payment will be required in advance and bookings will not be confirmed until full payment has been received by BBSI. BBSI can only book a maximum of 4-weeks residential accommodation. Should students wish to extend their stay beyond this period, they must do so directly with the residence, on arrival, and pay the residence directly.
- Bookings must be for full weeks, not part weeks, and arrival must be confirmed as either a Saturday or Sunday. Departure must be on a Saturday.
- Students must be 18 years or above.
- A minimum of 4 weeks notice is required to cancel a reservation.

BBSI acts as an intermediate between the residence and students in order to provide students with accommodation options. The information provided above has been supplied by the residence. Whilst every care has been taken in compiling the information supplied, BBSI cannot accept responsibility for the accuracy of this information or be held responsible for any errors or inaccuracies in the supplied information.